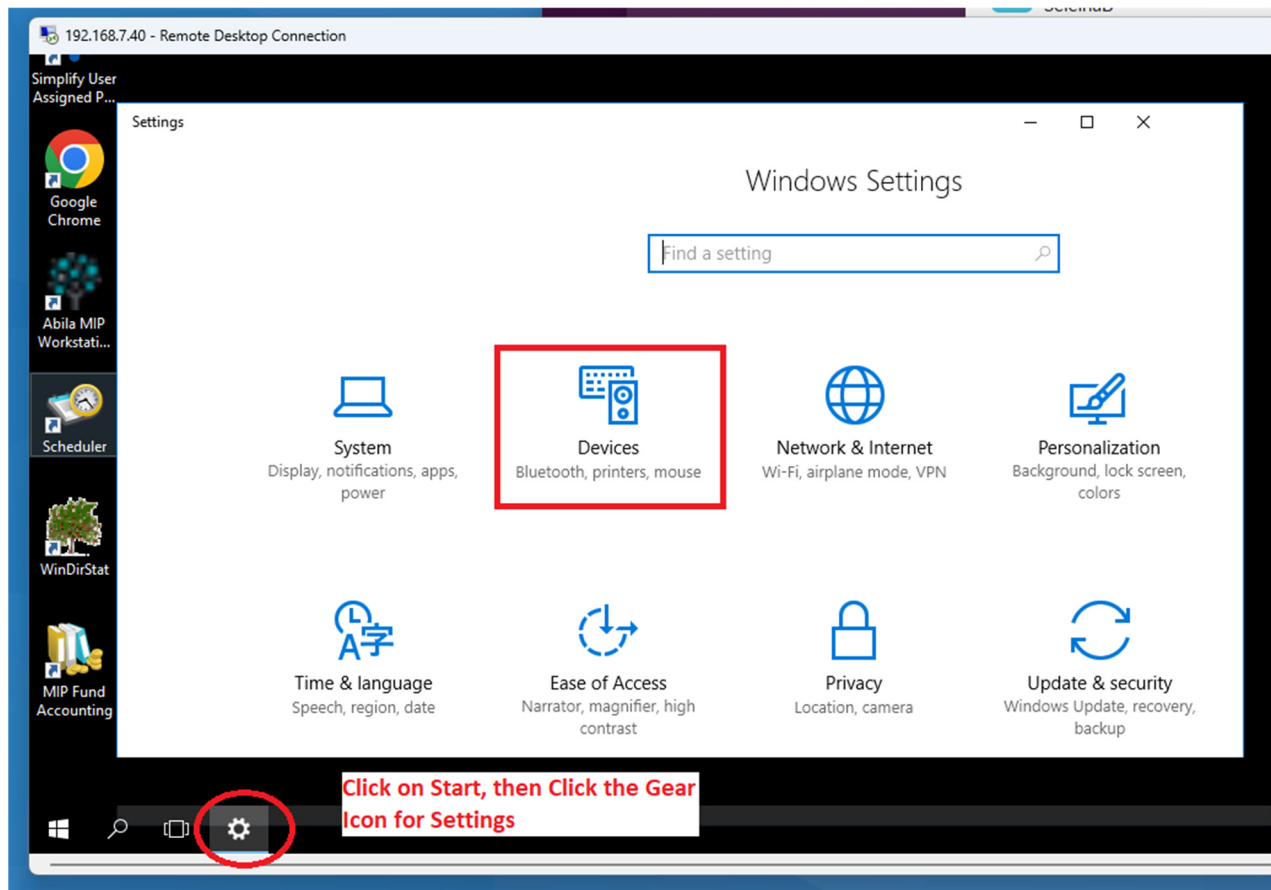
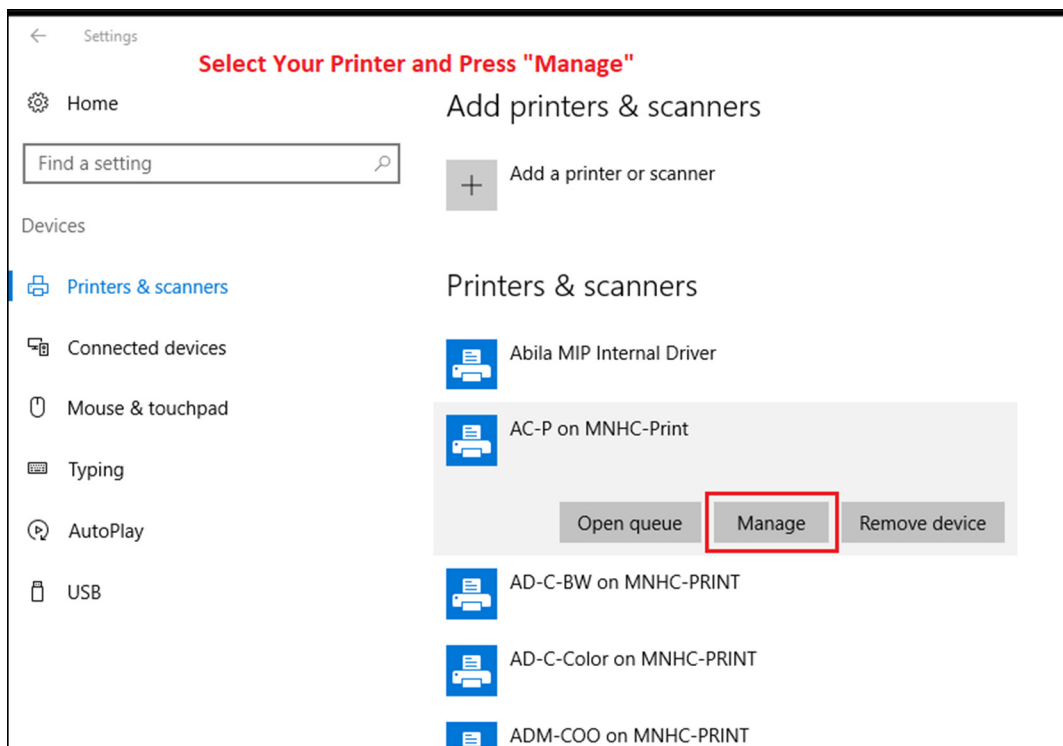


MIPs - Abilia Set Default Printer - Connect to MIPs server but **DO NOT OPEN MIPs** application

Click Start, then click on the Gear Icon, then click on Devices.



Select Your Printer, then select **Manage**.



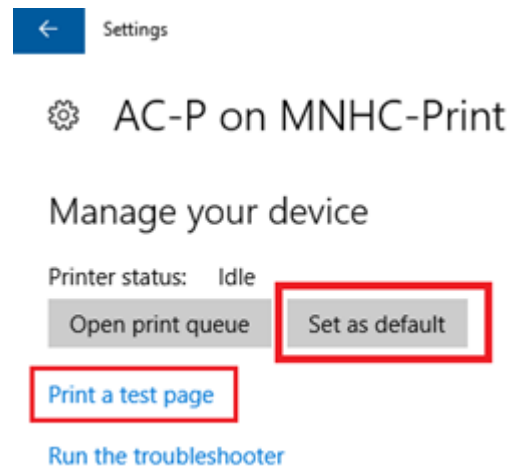
Select **"Set as Default"**

As shown below in the red box

And Select **"Print a Test Page"**

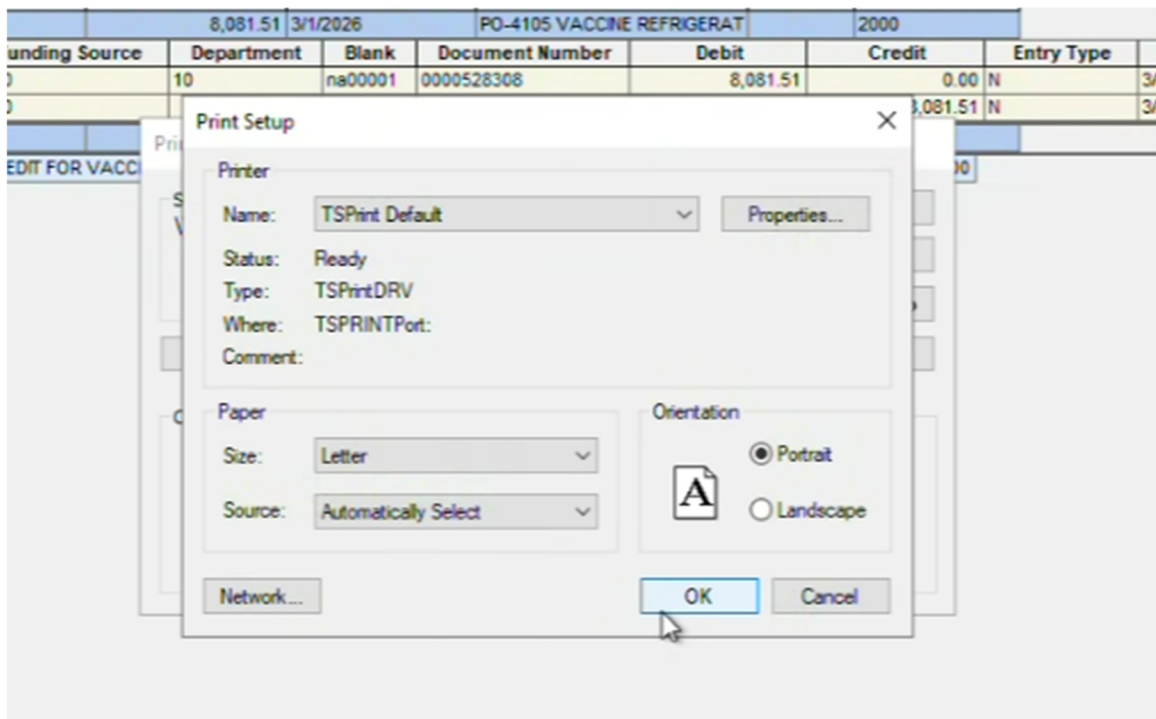
Did it print?

Now try to print while in MIPS/Abila.



Open MIPS

When printing, select: Select **TSPrint Default** or **TSPrint Printer**.



Did it fail? Are you sure your desktop computer has a default printer and prints?

[How to Set Your Default Printer](#)

Still trouble? If you have not restarted your computer in the past 5 days, I suggest restarting it now.

If TSPrint is not listed, please submit a ticket to request this **TSPRINT** installation.